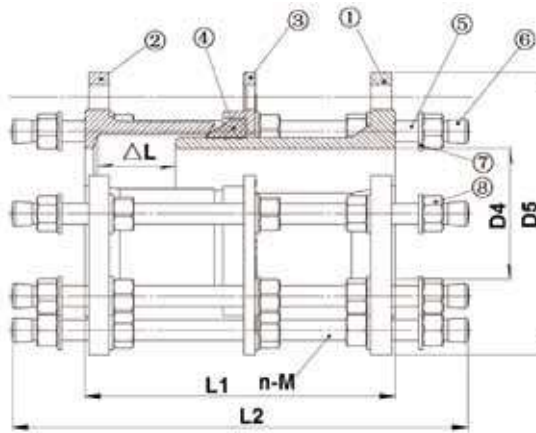


Materials and Features

- Ductile iron GGG50 material with FBE coated
- EPDM Gasket
- Galvanized steel bolts & nuts, dacromet is available
- PN10, PN16, PN25 working pressure

Item No.	Parts Name	Material
1	Flange	Ductile Iron
2	Flange	Ductile Iron
3	Gland	Ductile Iron
4	Gasket	EPDM
5	Stud	Galvanized Steel
6	Cap	Plastic
7	Washer	Galvanized Steel
8	Nut	Galvanized Steel

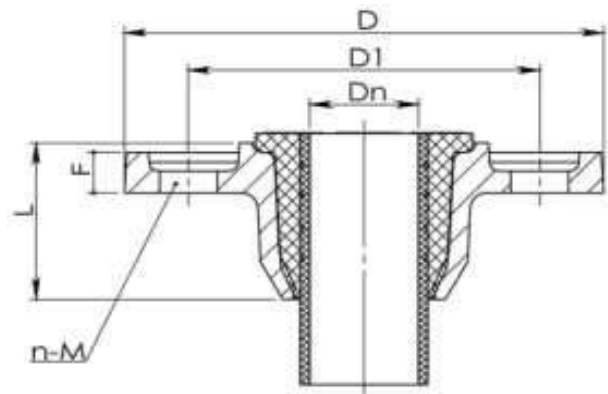


Dimensions (mm)

DN	ΔL	Length		PN10			PN16			PN25					
		L1	L2	D4	D5	n-M	D4	D5	n-M	ΔL	L1	L2	D4	D5	n-M
65	50	200	350	145	185	4-16	145	185	4-16	-	-	-	-	-	-
80	50	200	350	160	200	8-16	160	200	8-16	50	210	350	160	200	8-16
100	50	200	350	180	220	8-16	180	220	8-16	50	220	350	190	235	8-20
125	50	200	350	210	250	8-16	210	250	8-16	50	220	380	220	270	8-24
150	50	200	350	240	285	8-20	240	285	8-20	50	230	380	250	300	8-24
200	50	220	380	295	340	8-20	295	340	12-20	50	230	410	310	360	12-24
250	50	230	380	350	400	12-20	355	400	12-24	50	250	460	370	425	12-27
300	50	250	410	400	455	12-20	410	455	12-24	50	250	460	430	485	16-27
350	50	260	410	460	505	16-20	470	520	16-24	50	270	480	490	555	16-30
400	50	270	450	515	565	16-24	525	580	16-27	50	280	510	550	620	16-33
450	50	270	450	565	615	20-24	585	640	20-27	50	280	510	600	670	20-33
500	50	280	450	620	670	20-24	650	715	20-30	50	300	510	660	730	20-33
600	50	300	480	725	780	20-27	770	840	20-33	50	320	550	770	845	20-36
700	50	300	480	840	895	24-27	840	910	24-33	50	340	550	875	960	20-39
800	50	320	500	950	1015	24-30	950	1025	24-36	50	360	650	990	1085	24-45
900	50	320	500	1050	1115	28-30	1050	1125	28-36	50	380	650	1090	1185	28-45
1000	50	340	550	1160	1230	28-33	1170	1255	28-39	50	400	690	1210	1320	28-52
1100	50	340	550	1270	1340	32-33	1270	1355	32-39	-	-	-	-	-	-
1200	50	360	580	1380	1455	32-36	1390	1485	32-45	50	450	700	1420	1530	32-52
1400	50	380	630	1590	1675	36-39	1590	1685	36-45	50	480	810	1640	1755	36-56
1500	50	400	665	1700	1785	36-39	1710	1820	36-52	-	-	-	-	-	-
1600	50	400	700	1820	1915	40-45	1820	1930	40-52	50	510	815	1860	1975	40-56
1800	50	420	730	2020	2115	44-45	2020	2130	44-52	50	540	865	2070	2195	44-64
2000	50	440	730	2230	2325	48-45	2230	2345	48-56	50	580	930	2300	2425	48-64

■ Materials and Features

- Ductile iron GGG50 material with FBE coated
- EPDM Gasket+ Brass Seal Ring
- PN10, PN16 working pressure
- Flange drilling ISO PN10/16
- Angular deflection +/- 6°

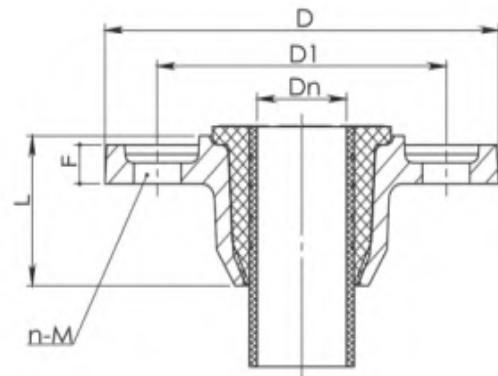


■ Dimensions (mm)

DN	Pipe O.D	Length	W.T	Flange Drilling					
				PN10			PN16		
				L	F	D	D1	n-M	D
40	40	50	18	150	110	4x19	150	110	4x19
40	50	50	18	150	110	4x19	150	110	4x19
50	50	50	20	165	125	4x19	165	125	4x19
50	63	50	20	165	125	4x19	165	125	4x19
60/65	63	50	20	185	135/145	4x19	185	135/145	4x19
60/65	75	55	20	185	135/145	4x19	185	135/145	4x19
80	90	61	20	200	160	8x19	200	160	8x19
100	110	67	20	220	180	8x19	220	180	8x19
125	125	70	20	250	210	8x19	250	210	8x19
150	160	80	21	285	240	8x23	285	240	8x23
200	200	90	21	340	295	8x23	340	295	12x23
200	225	90	21	340	295	8x23	340	295	12x23
250	250	95	23	400	350	12x23	400	355	12x28
300	315	110	26	455	400	12x23	455	400	12x28
400	400	130	27	565	515	16x28	580	525	16x31

■ Materials and Features

- Ductile iron GGG50 material with FBE coated
- EPDM Gasket+ Brass Seal Ring
- PN10, PN16 working pressure
- Flange drilling ISO PN10/16
- Angular deflection +/- 6°



■ Dimensions (mm)

DN	Pipe O.D	Length	W.T	Flange Drilling					
				PN10			PN16		
				L	F	D	D1	n-M	D
40	40	50	18	150	110	4x19	150	110	4x19
40	50	50	18	150	110	4x19	150	110	4x19
50	50	50	20	165	125	4x19	165	125	4x19
50	63	50	20	165	125	4x19	165	125	4x19
60/65	63	50	20	185	135/145	4x19	185	135/145	4x19
60/65	75	55	20	185	135/145	4x19	185	135/145	4x19
80	90	61	20	200	160	8x19	200	160	8x19
100	110	67	20	220	180	8x19	220	180	8x19
125	125	70	20	250	210	8x19	250	210	8x19
150	160	80	21	285	240	8x23	285	240	8x23
200	200	90	21	340	295	8x23	340	295	12x23
200	225	90	21	340	295	8x23	340	295	12x23
250	250	95	23	400	350	12x23	400	355	12x28
300	315	110	26	455	400	12x23	455	400	12x28
400	400	130	27	565	515	16x28	580	525	16x31

■ Main Parts and Materials

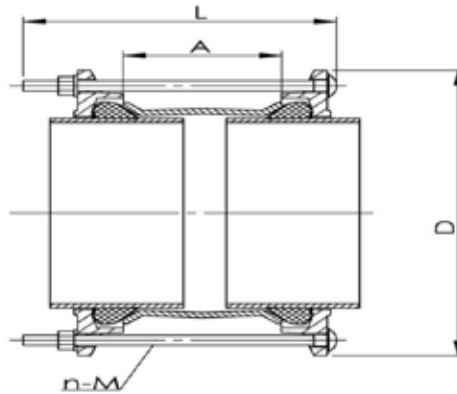
- Ductile iron gland & center sleeve with FBE coated
Steel center sleeve is available according to request
- Galvanized carbon steel bolts & nuts
Dacromet is available according to request

■ Gasket

- EPDM Gasket

■ Features

- Epoxy coating min. 250 microns
- Working pressure PN10, PN16
- WRAS is available according to request



■ Dimensions (mm)

Size		Range (mm)		Boltings x No.
Inch	DN	Min	Max	
1 1/2"	DN40	48	58	M12 x 2
2"	DN50	59	73	M12 x 4
2 1/2"	DN65	72	85	M12 x 4
3"	DN80	88	103	M12 x 4
4"	DN100	109	128	M12 x 4
5"	DN125	132	154	M12 x 4
6"	DN150	159	182	M12 x 4
7"	DN175	192	210	M12 x 4
8"	DN200	218	235	M12 x 4
10"	DN250	266	291	M12 x 6
12"	DN300	315	332	M12 x 6
14"	DN350	374	391	M12 x 8
16"	DN400	417	437	M12 x 8
18"	DN450	480	500	M12 x 10
20"	DN500	526	546	M12 x 12
24"	DN600	630	650	M12 x 12

■ Main Parts and Materials

- Ductile iron gland & center sleeve with FBE coated
Steel center sleeve is available according to request
- Galvanized carbon steel bolts & nuts
Dacromet is available according to request

■ Gasket

- EPDM Gasket

■ Features

- Epoxy coating min. 250 microns
- Working pressure PN10, PN16
- WRAS is available according to request

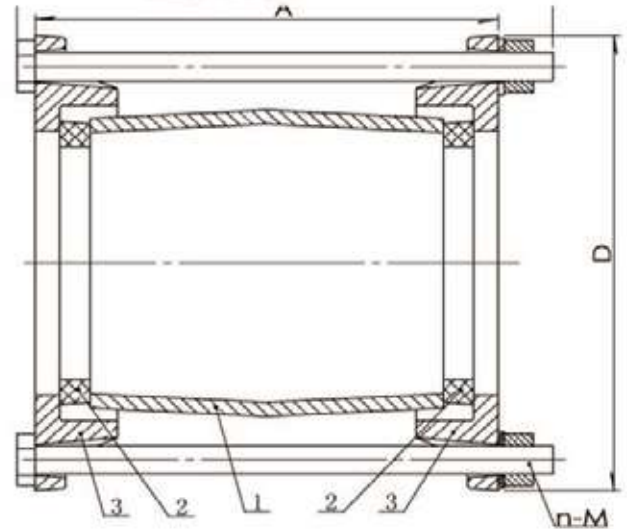


■ Dimensions (mm)

Size		Range (mm)		Boltings x No.
Inch	DN	Min	Max	
1 1/2"	DN40	48	58	M12 x 2
2"	DN50	59	73	M12 x 4
2 1/2"	DN65	72	85	M12 x 4
3"	DN80	88	103	M12 x 4
4"	DN100	109	128	M12 x 4
5"	DN125	132	154	M12 x 4
6"	DN150	159	182	M12 x 4
7"	DN175	192	210	M12 x 4
8"	DN200	218	235	M12 x 4
10"	DN250	266	291	M12 x 6
12"	DN300	315	332	M12 x 6
14"	DN350	374	391	M12 x 8
16"	DN400	417	437	M12 x 8
18"	DN450	480	500	M12 x 10
20"	DN500	526	546	M12 x 12
24"	DN600	630	650	M12 x 12

■ Materials and Features

- Sleeve :Cast iron GG20
- End ring :Cast iron GG20
- Gasket :EPDM/NBR
- Bolt Nut :Steel Galvanize
- Pressure PN10 PN16



■ Dimensions (mm)

PVC Pipe OD	D	A	Bolts No.	MXL	Weight(kg)
50	53	140	2	M10X160	1.9
63	66	140	2	M10X180	2.2
75	78	140	2	M10X180	2.7
90	93	140	2	M10X180	3
110	113	150	3	M10X180	4.5
125	128	150	3	M12X200	6.5
140	143	160	3	M12X200	7
160	164	180	3	M12X220	8
180	184	180	3	M12X220	10
200	205	180	3	M12X220	12
250	255	210	4	M14X250	19
315	322	210	4	M14X250	25
400	408	210	6	M14X250	30
500	510	210	6	M14X250	40

■ Main Parts and Materials

- Ductile iron material with FBE coated
- Galvanized steel bolts, nuts

■ Gasket

- EPDM Gasket

■ Features

- Epoxy coating min. 250 microns.
- Working pressure PN10, PN16.



■ Dimensions (MM)

DE	Outlet Inch	Length mm	Width mm	DE	Outlet Inch	Length mm	Width mm	DE	Outlet Inch	Length mm	Width mm
50	3/4"	88	100	110	3/4"	170	120	180	3/4"	250	140
	1"				1"				1"		
	1-1/4"				1-1/4"				1-1/4"		
	1-1/2"				1-1/2"				1-1/2"		
	2"				2"				2"		
63	3/4"	124	100	125	3/4"	192	120	200	3/4"	280	140
	1"				1"				1"		
	1-1/4"				1-1/4"				1-1/4"		
	1-1/2"				1-1/2"				1-1/2"		
	2"				2"				2"		
75	3/4"	135	110	140	3/4"	208	120	250	3/4"	330	180
	1"				1"				1"		
	1-1/4"				1-1/4"				1-1/4"		
	1-1/2"				1-1/2"				1-1/2"		
	2"				2"				2"		
90	3/4"	150	110	160	3/4"	230	120	315	3/4"	400	180
	1"				1"				1"		
	1-1/4"				1-1/4"				1-1/4"		
	1-1/2"				1-1/2"				1-1/2"		
	2"				2"				2"		

■ Main Parts and Materials

- Gray cast iron material with Black Painting
- Galvanized steel bolts, nuts;
Dacromet is available according to request

■ Gasket

- EPDM Gasket

■ Features

- PN16 working pressure



■ Dimensions (MM)

DN	Thread	DN	Thread	DN	Thread
40	3/4"	125	1"	180	1 1/4"
50	3/4"	125	1 1/4"	180	1 1/2"
50	1"	125	1 1/2"	180	2"
63	3/4"	125	2"	180	3"
63	1"	125	2 1/2"	200	3/4"
63	1 1/4"	125	3"	200	1"
75	3/4"	140	1"	200	1 1/4"
75	1"	140	1 1/4"	200	1 1/2"
75	1 1/4"	140	1 1/2"	200	2"
90	3/4"	140	2"	200	2 1/2"
90	1"	140	2 1/2"	200	3"
90	1 1/4"	140	3"	250	1"
90	1 1/2"	160	3/4"	250	1 1/4"
90	2"	160	1"	250	1 1/2"
110	3/4"	160	1 1/4"	250	2"
110	1"	160	1 1/2"	250	2 1/2"
110	1 1/4"	160	2"	250	3"
110	1 1/2"	160	2 1/2"	315	2"
110	2"	160	3"	315	2 1/2"
125	3/4"	180	1"	315	3"

■ Main Parts and Materials

- Ductile iron body.
- Band, Bolts, Nuts, Washer are stainless steel.

■ Gasket

- EPDM to BS EN681-1 (WRAS)

■ Features

- Outlet body according to EN 545 standard.
- Band width 40 mm & 60 mm, thickness 1,5 mm (minimum)
- Epoxy coating min. 250 microns.
- Working pressure PN16.



■ Dimensions (MM)

Size	Normal DN	Range mm	Bolts Dia & Length	Size	Normal DN	Range mm	Bolts Dia & Length
DN50	A x 1, 1 1/4	55-75	M12 x 130	DN200	B x 1 1/2, 2	200-227	M16 x 120
DN65	A x 1, 1 1/4	70-90	M12 x 130	DN200	B x 1 1/2, 2	215-240	M16 x 120
DN80	A x 1, 1 1/4	75-98	M12 x 130	DN200	B x 1 1/2, 2	230-255	M16 x 120
DN80	A x 1, 1 1/4	87-107	M12 x 130	DN250	B x 1 1/2, 2	260-285	M16 x 120
DN100	A x 1, 1 1/4	97-118	M12 x 130	DN250	B x 1 1/2, 2	285-310	M16 x 120
DN100	A x 1, 1 1/4	105-125	M12 x 130	DN300	B x 1 1/2, 2	315-A	M16 x 120
DN100	A x 1, 1 1/4	110-133	M12 x 130	DN300	B x 1 1/2, 2	338-365	M16 x 120
DN125	A x 1, 1 1/4	130-155	M12 x 130	DN350	B x 1 1/2, 2	344-372	M16 x 120
DN150	B x 1 1/2, 2	158-177	M12 x 130	DN350	B x 1 1/2, 2	368-384	M16 x 120
DN150	B x 1 1/2, 2	158-190	M12 x 130	DN400	B x 1 1/2, 2	394-420	M16 x 120
DN150	B x 1 1/2, 2	161-186	M16 x 120	DN400	B x 1 1/2, 2	404-430	M16 x 120
DN175	B x 1 1/2, 2	185-210	M16 x 120	DN400	B x 1 1/2, 2	418-443	M16 x 120
DN200	B x 1 1/2, 2	190-230	M16 x 120	DN450	B x 1 1/2, 2	474-493	M16 x 120

Construtubos

Líderes en Soluciones Integrales para el Manejo del Agua **Full Stainless Steel**

■ Main Parts and Materials

- Band, Bolts, Nuts, Washer, Lifter Bar, Sidebar are all stainless steel AISI304.
- AISI201 is available upon request.

■ Gasket

- EPDM for normal application, NBR SBR for option.
- EPDM to BS EN681-1 / NBR to EN682 (WRAS)

■ Lug

- Stainless Steel Lugs to AISI304.



■ RC100

O.D Range (mm)	No. of Band	O.D Range (mm)	No. of Band	O.D Range (mm)	No. of Band	Pressure	Length (mm)
48-58	1	195-205	1	195-205	1	PN10/16	150-600
55-65	1	218-228	1	218-228	1	PN10/16	150-600
67-77	1	228-238	1	228-238	1	PN10/16	150-600
83-93	1	238-248	1	238-248	1	PN10/16	150-600
92-102	1	247-257	1	247-257	1	PN10/16	150-600
107-117	1	258-268	1	258-268	1	PN10/16	150-600
123-130	1	271-281	1	271-281	1	PN10/16	150-600
135-145	1	282-292	1	282-292	1	PN10/16	150-600
145-155	1	294-304	1	294-304	1	PN10/16	150-600
158-168	1	302-312	1	302-312	1	PN10/16	150-600
166-176	1	310-320	1	310-320	1	PN10/16	150-600
173-183	1	327-337	1	327-337	1	PN10/16	150-600
180-190	1	342-352	1	342-352	1	PN10/16	150-600
188-198	1	356-366	1	356-366	1	PN10/16	150-600

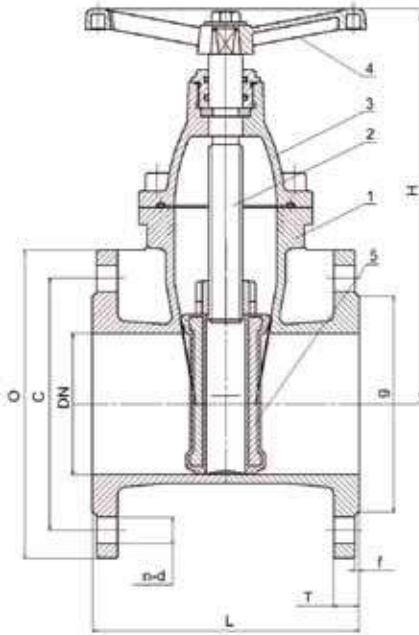
■ RC200

O.D Range (mm)	No. of Band	O.D Range (mm)	No. of Band	O.D Range (mm)	No. of Band	Pressure	Length (mm)
86-106	2	282-302	2	421-441	2	PN10/16	150-600
113-133	2	295-315	2	436-456	2	PN10/16	150-600
120-141	2	324-344	2	453-473	2	PN10/16	150-600
168-188	2	335-355	2	469-489	2	PN10/16	150-600
174-194	2	347-367	2	488-508	2	PN10/16	150-600
219-239	2	357-377	2	505-525	2	PN10/16	150-600
228-249	2	365-385	2	525-545	2	PN10/16	150-600
250-260	2	383-403	2	546-566	2	PN10/16	150-600
273-293	2	404-424	2	562-582	2	PN10/16	150-600

Materials and Features

- Ductile iron body & bonnet with FBE coated
- Non-rising stem
- PN16 working pressure
- Face to face according to DIN3202 F4/F5

Item	Part Name	Material
1	Body	DI
2	Stem	2Cr13/420/304
3	Bonnet	DI
4	Handwheel	DI
5	Wedge	DI/EPDM

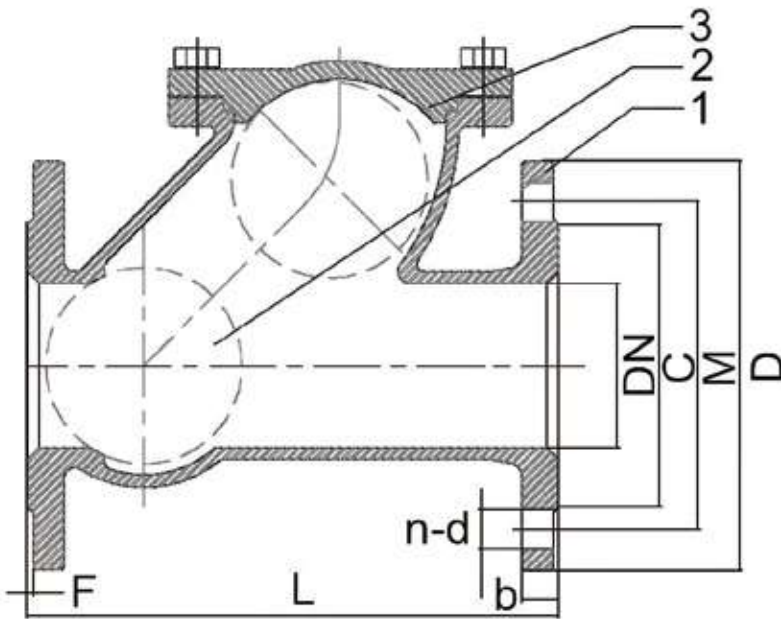


Dimensions (mm)

DN	L		H	g	C	O	T	n-d
	F4	F5						
40	140	240	245	88	110	150	19	4-19
50	150	250	278	102	125	165	19	4-19
65	170	270	288	122	145	185	19	4-19
80	180	280	310	138	160	200	19	8-19
100	190	300	360	158	180	220	19	8-19
125	200	325	405	188	210	250	19	8-19
150	210	350	448	212	240	285	19	8-23
200	230	400	550	268	295	340	20	12-23
250	250	450	668	320	355	405	22	12-28
300	270	500	750	378	410	460	24.5	12-28
350	290	550	900	438	470	520	26.5	16-28
400	310	600	1030	490	525	580	28	16-31
450	330	650	1080	532	525	640	30	20-31
500	350	700	1188	610	650	715	31.5	20-34
600	390	800	1380	725	770	840	36	20-37

Materials and Features

- Ductile iron body & cover with FBE coated
- Ductile iron ball + EPDM
- PN16 working pressure
- Flange according to DIN2501

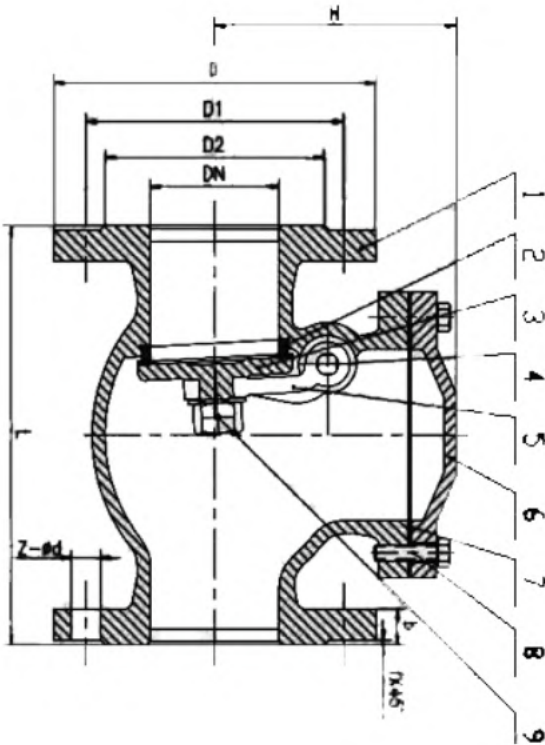


Item	Part Name	Material
1	Body	Ductile Iron
2	Ball	Ductile Iron/EPDM
3	Cover	Ductile Iron

Dimensions (mm)

DN	L	D	C	M	b	F	n-d
50	200	165	102	125	19	3	4-19
65	240	185	122	145	19	3	4-19
80	280	200	138	160	19	3	8-19
100	300	220	158	180	19	3	8-19
125	350	250	188	210	19	3	8-19
150	400	285	212	240	19	3	8-23
200	500	340	268	295	20	3	12-23
250	600	395	320	355	22	3	12-28
300	700	445	378	410	24.5	4	12-28
350	800	505	438	470	26.5	4	16-28
400	900	585	490	525	28	4	12-31
450	1000	640	532	585	30	4	20-31
500	1100	715	610	650	32	4	20-33
600	1300	840	725	770	36	5	20-37

Materials and Features



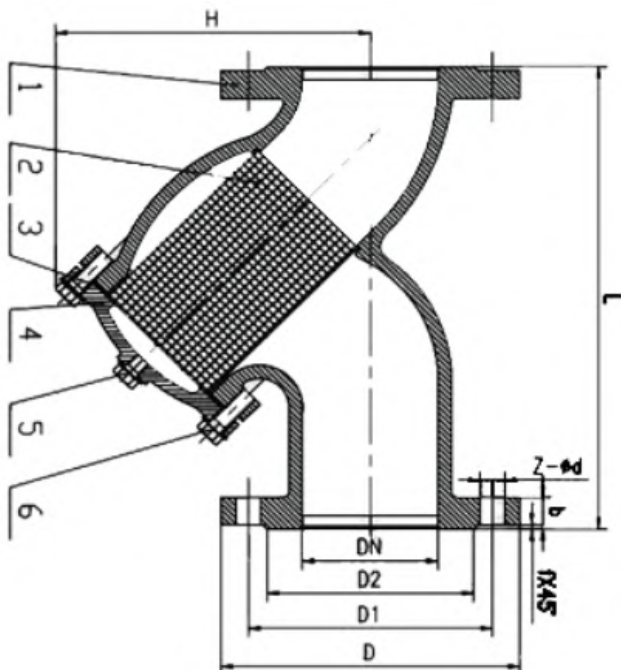
ITEM	PARTS NAME	Brass Seating	Rubber Seating
		Material	Material
	BODY	GRAY CAST IRON	GRAY CAST IRON
2	SEAT	CAST BRASS	CAST BRASS
3	DISC	GRAY CAST IRON+BRASS	GRAY CAST IRON+RUBBER
4	HANGER PIN	CARBON IRON	CARBON IRON
5	ARM	DUCTILE STEEL	DUCTILE STEEL
6	BONNET	GRAY CAST IRON	GRAY CAST IRON
7	GASKET	GRAPHITE	GRAPHITE
8	BOLT	CARBON STEEL	CARBON STEEL
9	NUT	CARBON STEEL	CARBON STEEL

Dimensions (mm)

DN	L	D	D1	D2	b	Z-d	f	H	KG
40	180	150	110	88	18	4-18	3	138	11.5
50	200	165	125	102	20	4-18	3	140	13.6
65	240	185	145	122	20	4-18	3	142	21
80	260	200	160	138	22	4-18/8-18	3	165	26.5
100	300	220	180	158	22/24	8-18	3	175	32
125	350	250	210	188	24/26	8-18	3	198	45
150	400	285	240	212	24/26	8-18	3	228	71.5
200	500	340	295	268	26/30	8-23/12-23	3	245	93/95
250	600	295/405	350/355						

Materials and Features

ITEM	PARTS NAME	MATERIAL
1	BODY	CAST IRON
2	SCREEN	STAINLESS STEEL
3	GASKET	GRAPHITE
4	BONNET	CAST IRON
5	PLUG GASKET	GGG40 GRAPHITE
6	BOLT GASKET	CARBON STEEL



Dimensions (mm)

DN	L	D	D1	D2	b	Z-d	f	H	KG
15	130	95	65	45	14	4-14	2	76	2.33
20	150	105	75	58	16	4-14	2	83	3
25	160	115	85	68	16	4-14	2	91	4
32	180	140	100	78	18	4-18	2	111	6
40	200	150	110	88	18	4-18	3	118	7
50	230	165	125	102	20	4-18	3	178	11.8
65	290	185	145	122	20	4-18	3	211	16.45
80	310	200	160	138	22	8-18	3	202	19
100	350	220	180	158	24	8-18	3	226	24.9
125	400	250	210	188	26	8-18	3	264	35.6
150	480	285	240	212	26	8-23	3	309	51.9
200	600	340	295	268	30	12-23	3	410	92.3
250	730	405	355	320	32	12-27	3	444	142
300	850	460	410	378	32	12-27	4	486	210
350	980	520	470	438	36	16-27	4	595	284.7
400	1100	580	525	490	38	16-30	4	673	399.4